

A method for reducing or eliminating COLOR MOIRE' problems in digital images.

www.imagelinkstudio.com

ImageLink Corp.

Lexington, MA. Ph 781-869-3287

THE FINE PRINT- the following procedures are provided as a courtesy to clients and associates of ImageLink, Corp. without obligations, guarantees or promises. It's a freebie!

A problem which occurs under certain conditions in a digital photograph is an effect called *Color Moire'* (pronounced *more-ay*). This is characterized by rainbow colored hues appearing in select areas of an image. Color moire' typically appears in hair, especially mixed gray hair, as well as denim or twill clothing.

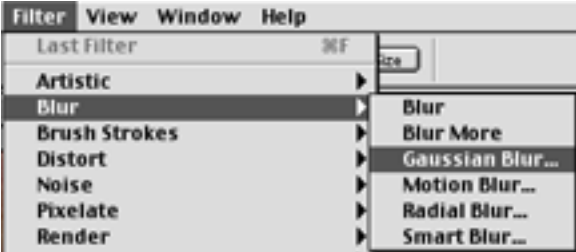
An example with fabric is shown below. The effect is more noticeable on the collar of the shirt.



There are other types of moire' which cannot be repaired using the methods outlined here. If your moire' problem does not fit the description above or is unresponsive to these methods, its more likely related to resolution or screening issues and should be corrected with other methods.

This method was developed in Photoshop 6 (but PS 5 works basically the same). Start with the image on-screen ready to edit.

1) go to menu **FILTER > BLUR > GAUSSIAN BLUR**.

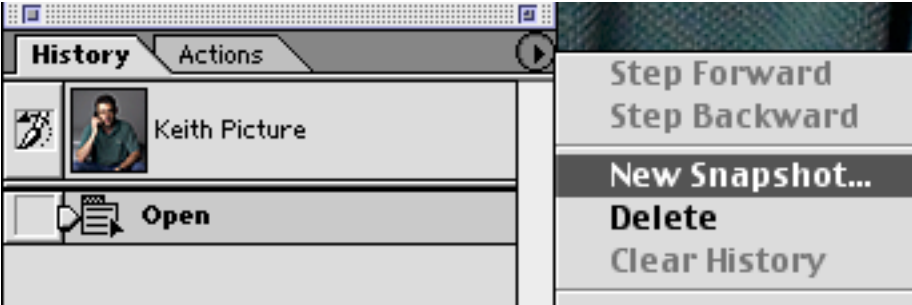


2) Set pixel radius to a value between 5 and 12. The ideal setting will vary depending on image content, size and extent of moire' effect. 8 is a good starting point.

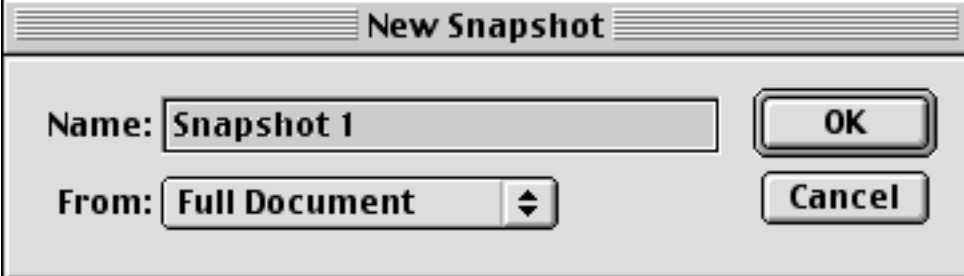


Click OK - entire image becomes blurred.

3) Go to **HISTORY** palette and select **NEW SNAPSHOT**



Click OK to default name **SNAPSHOT 1**.



4) In the HISTORY Palette, click & drag the GAUSSIAN BLUR item to the trash icon just below.

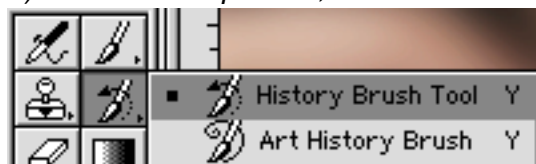


Blurred image returns to normal.

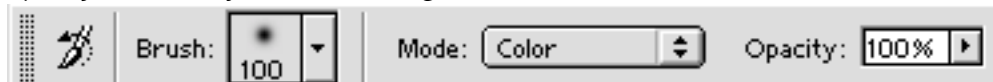
5) In the HISTORY Palette, click on (highlight) SNAPSHOT 1.



6) In the Tools palette, Select the HISTORY Brush tool.



7) Adjust History Brush settings - set MODE to COLOR and select a large brush size.



8) In the HISTORY Palette, click (highlight) the original image.



Make sure the History Brush indicator stays on Snapshot 1.

9) Using the HISTORY Brush, you can now "paint away" color moire' patterns where they appear in the image. You can adjust the brush size for more precise effect. For better visual reference, make sure your Photoshop preference setting for the Displays & Cursors option is set to Brush Size. Once completed, just save the file and you're done.

ImageLink Corp. Lexington, MA. Ph. 781--869-3287. www.imagelinkstudio.com